

**Tappi - Tamponi
Guarnizioni**

**Caps - Rubber
buffers - Seals**

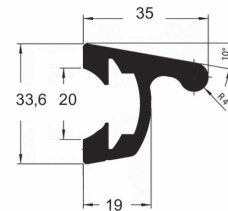
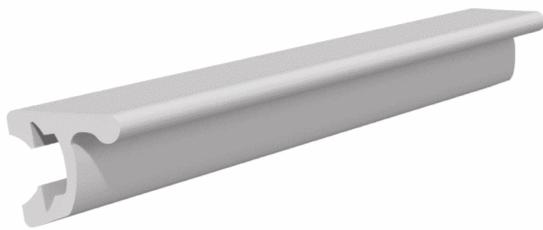
49



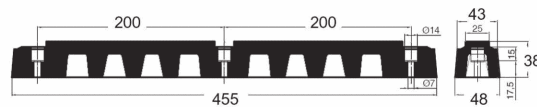
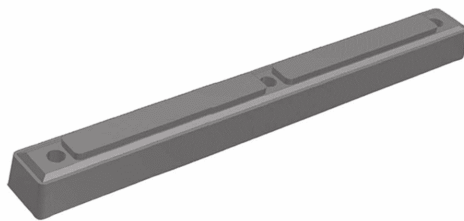
RE-ALL

BATTISPONDA

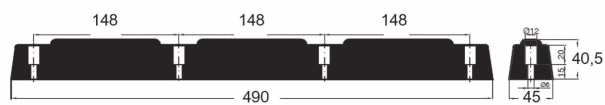
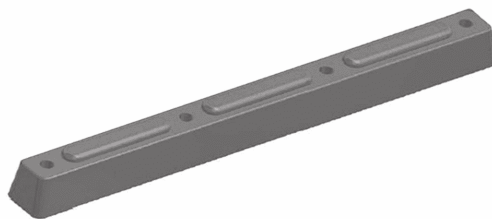
BUFFER



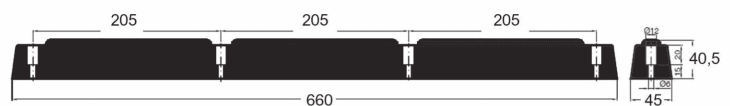
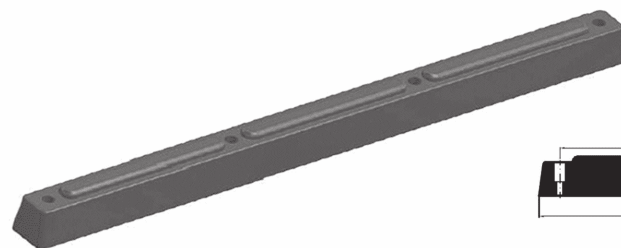
Art. 49-00003/A Battisponda in alluminio anodizzato L=3200 *Aluminium anodized buffer L=3200* (Kg. 3,400)



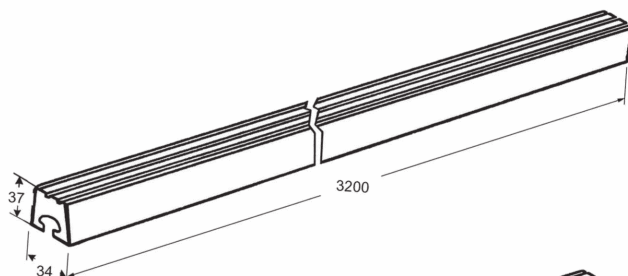
Art. 49-00001 Battisponda in gomma L=455 *Black rubber buffer L=455* (Kg.0,960)



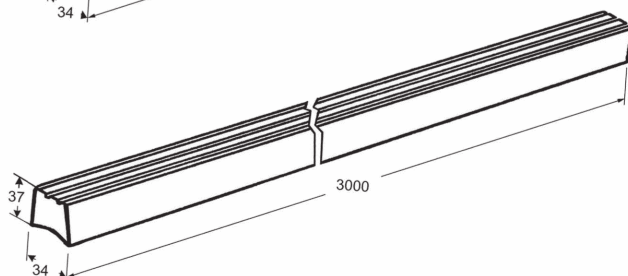
Art. 49-00000 Battisponda in gomma L=490 *Black rubber buffer L=490* (Kg.0,615)



Art. 49-00002 Battisponda in gomma L=660 *Black rubber buffer L=660* (Kg.1,249)



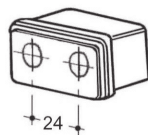
Art. 49-00003
Battisponda Pvc nero L=3200
Black PVC buffer L=3200
(Kg.4,500)



Art. 49-00003/P
Battisponda Pvc nero (pieno) L=3000
Black PVC buffer (full) L=3000

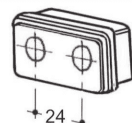
GOMMINI BATTISPONDA

BUFFER

**Art. 49-00004**

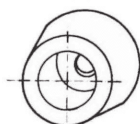
(Kg.0,043)

Gommino battisponda int. fori 24 - 50x30xH.30
 Black rubber buffer int.holes 24 - 50x30xH.30

**Art. 49-00006**

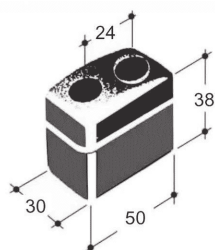
(Kg.0,020)

Gommino battisponda int.fori 24 50x30xH.12
 Black rubber buffer int.holes 24 50x30xH.12

**Art. 49-00008**

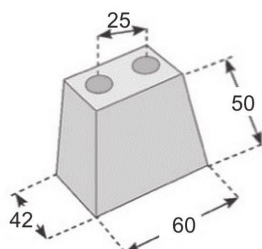
(Kg.0,006)

Gommino battisponda D.30 - D.26 - H.13
 Black rubber conical buffer D.30 - D.26 -H.13

**Art. 49-00005**

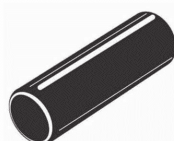
(Kg.0,059)

Gommino battisponda bombato int.fori 24 50x30xH.38
 Black rubber buffer int.holes 24 50x30xH.38

**Art. 49-00007**

(Kg.0,134)

Gommino battisponda int.fori 25 - 60x42xH.50
 Black rubber buffer int.holes 25 - 60x42xH.50

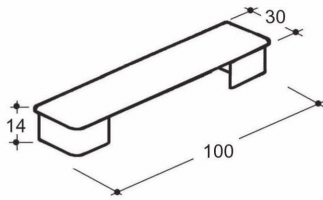
**Art. 49-00120**

(Kg.0,013)

Pomello per leva tenditelo (art.34-00175)
 Knob lever for curtain (art. 34-00175)

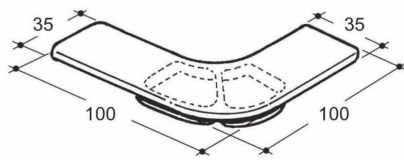
Tappi in PVC

Black PVC cap

**Art. 49-00009**

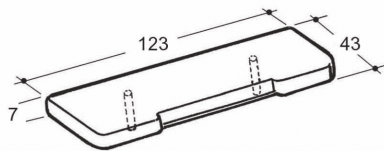
(Kg.0,010)

Tappo per profilo paracicli 100x30

Black PVC cap for aluminium side protection 100x30**Art. 4900010**

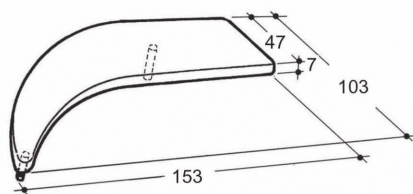
(Kg.0,018)

Tappo per profilo curva paracicli 100x30

Black PVC corner cap for aluminium side protection 100x30**Art. 49-00011**

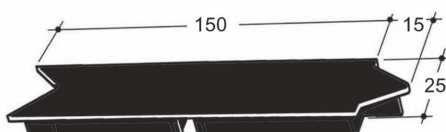
(Kg.0,009)

Tappo per profilo paracicli 120x40

Black PVC cap for aluminium side protection 120x40**Art. 49-00012**

(Kg.0,009)

Tappo per profilo curva paracicli 120x40

Black PVC corner cap for aluminium side protection 120x40**Art. 49-00060**

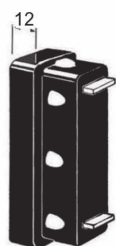
(Kg.0,013)

Tappo in PVC per stecca 150x25

Black PVC cap for aluminium profile 150x25

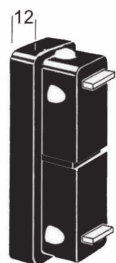
Tappi in gomma e in pvc

Pvc and rubber caps

**Art. 49-00013**

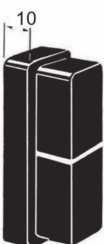
(Kg.0,082)

Tappo gomma senza anima per stecca 100x25 c/alette metalliche
Black rubber cap for aluminium profile 100x25 with iron fixed wings

**Art. 49-00015**

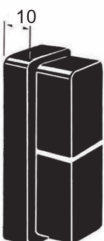
(Kg.0,093)

Tappo gomma doppia camera per stecca 120x25 c/alette metalliche
Black rubber cap for aluminium prof. 120x25 with double chamber and iron fixed wings

**Art. 49-00015/B**

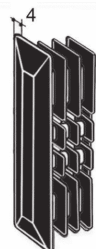
(Kg.0,093)

Tappo gomma doppia camera per stecca 120x25
Black rubber cap for aluminium prof. 120x25

**Art. 49-00024**

(Kg.0,064)

Tappo gomma doppia camera per stecca 100x25
Black rubber cap for aluminium profile 100x25 with double chamber

**Art. 49-00014/A**

(Kg.0,020)

Tappo in PVC alettato per stecca 100x25
Black PVC cap for aluminium profile 100x25

**Art. 49-00016/A**

(Kg.0,020)

Tappo in PVC alettato per stecca 100x30
Black PVC cap for aluminium profile 100x30

Tappi in gomma e in pvc

Pvc and rubber caps

**Art. 49-00093**

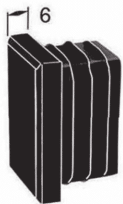
(Kg.0,005)

Tappo in PVC alettato per tubo 25x25
Black PVC cap for tube 25x25

**Art. 49-00092**

(Kg.0,009)

Tappo in PVC alettato per tubo 40x30
Black PVC cap for tube 40x30

**Art. 49-00017**

(Kg.0,019)

Tappo in PVC alettato per tubo 60x30x2
Black PVC cap for tube 60x30x2

**Art. 49-00094**

(Kg.0,013)

Tappo in PVC alettato per tubo 80x20
Black PVC cap for tube 80x20

**Art. 49-00090**

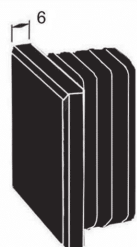
(Kg.0,039)

Tappo in PVC alettato per tubo 80x40
Black PVC cap for tube 80x40

**Art. 49-00091**

(Kg.0,042)

Tappo in PVC alettato per tubo 80x80
Black PVC cap for tube 80x80

**Art. 49-00099**

(Kg.0,039)

Tappo in PVC alettato per tubo 70x70
Black PVC cap for tube 70x70

Tappi in gomma e in pvc

Pvc and rubber caps

**Art. 49-00069**

(Kg.0,004)

Tappo in PVC alettato per tubo D.25
Black PVC cap for tube D.25

**Art. 49-00073**

(Kg.0,003)

Tappo per testata arrotondata (17-00057)
Corner cap PVC (for art. 17-00057)

**Art. 49-00074/DX - Art. 49-00074/SX**

(Kg.0,005)

Tappo per testata arrotondata per minimatic
 con doppia camera dx o sx (17-00060)

*Corner cap PVC for Mini Matic double Room
 right or left (for art. 17-00060)*

**Art. 49-00072**

(Kg.0,005)

Tappo per Mini Matic III
PVC cap for MINI MATIC III

Art. 49-00078

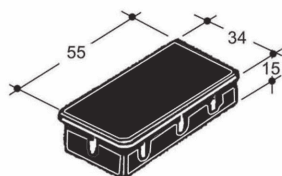
(Kg.0,005)

Tappo per Mini Matic open top
PVC cap for MINI MATIC open top



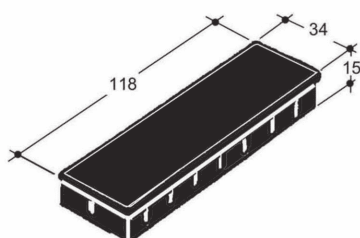
**Tappo per staffa parafango PVC per
 Black PVC cap for**

Art.	tubo D.-tube D.	Kg/cd.
49-00018	54	0,017
49-00019	35	0,008
49-00023	42	0,010

**Art. 49-00020**

(Kg.0,009)

Tappo in plastica per montante anteriore L.56
Black PVC cap for front pillar L.56

**Art. 49-00021**

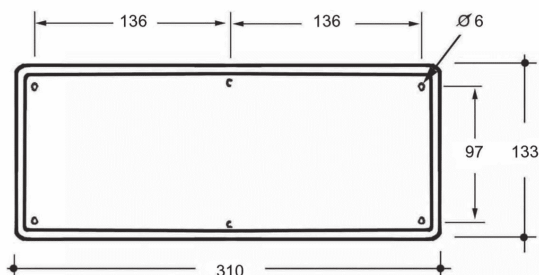
(Kg.0,018)

Tappo in plastica per montante centrale e posteriore L.120
Black PVC cap for rear and central pillar L.120

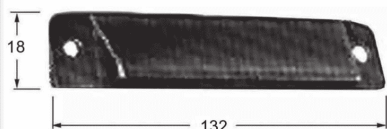
Paracolpo per maniglia in pvc

/

Side buffer pvc



Art. 49-00059 (Kg.0,322)
Paracolpo per maniglia
Side buffer



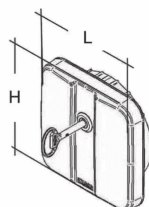
Art. 49-00044 (Kg.0,012)
Terminale plastica nera per bandella ferma carico (39-00034/35/36)
Black plastic endpiece for cargo restraint profile (39-00034/35/36)



Art. 49-00022 (Kg.0,113)
Testata in PVC per paraincastri per autocarri
PVC end cap for underrun protection system

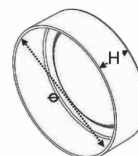
Tappi e fondelli tubi portamanichette

Hose containers lid and endcap



Art. 49-00100 (Kg.0,280)
Tappo per tubi portamanichette H.195 x L.185 - D.160
Hose containers lid H.195 x L.185 - D.160

Art. 49-00101
Tappo per tubi portamanichette H.235 x L.225 - D.200
Hose containers lid H.235 x L.225 - D.200

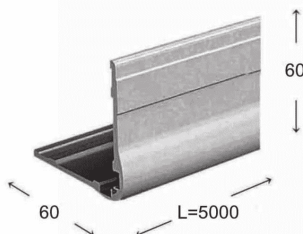


Art. 49-00103
Fondello per tubi portamanichette H.40 - D.160
Hose containers endcap H.40 - D.160

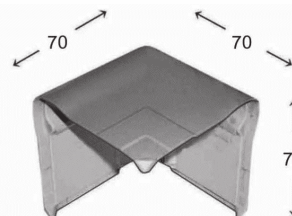
Art. 49-00104
Fondello per tubi portamanichette H.40 - D.200
Hose containers endcap H.40 - D.200

Cantonale in PVC

Pvc corner



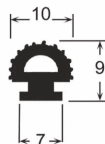
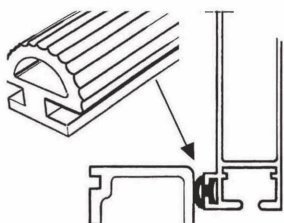
Art. 49-00110 (Kg.a barra 2,570)
Cantonale in pvc bianco L=5000
White pvc corner L=5000



Art. 49-00112 (Kg.0,062)
Blocco d'angolo in pvc bianco per art. 49-00110
Higher white pvc corner for art.49-00110

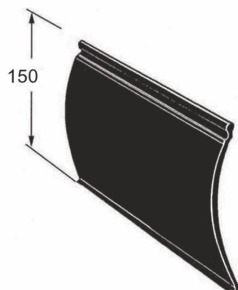
GUARNIZIONI

SEALS



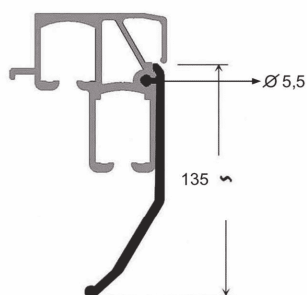
Art. 49-00026 (Kg./mt.0,040)
Guarnizione sponda per profili
(17-00026/17-00326/17-00056/17-00058)

Seal for aluminium profiles
(17-00026/17-00326/17-00056/17-00058)
(rotolo / roll mt. 200)



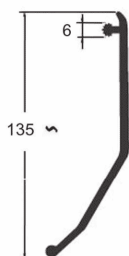
Art. 49-00027 (Kg./mt.0,756)
Guarnizione in PVC per tegolone
PVC seal for lateral curtain

(rotolo / roll mt.28)



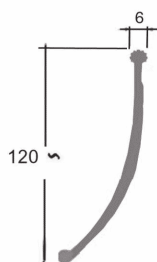
Art. 49-00027/N (Kg./mt.0,700)
Guarnizione in PVC per tegolone new (21-00058)
PVC seal for lateral curtain new (21-00058)

(rotolo / roll mt.14)



Art. 49-00027/S (Kg./mt.0,700)
Guarnizione in PVC per tegolone "S"
PVC seal for lateral curtain "S"

(rotolo / roll mt.14)

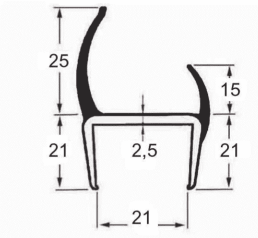


Art. 34-00315 (Kg./mt.0,700)
Guarnizione in PVC grigia 14 mt.
PVC seal grey 14 mt.

(rotolo / roll mt.14)

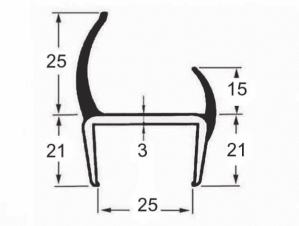
GUARNIZIONI

SEALS



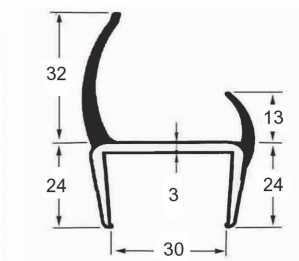
Art. 49-00028
 Guarnizione in PVC da 21 L=3150
 PVC seals da 21 L=3150

(Kg./mt.0,369)



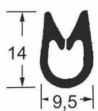
Art. 49-00029
 Guarnizione in PVC da 25 L=2850 - L=3150
 PVC seals da 25 L=2850 - L=3150

(Kg./mt.0,400)



Art. 49-00030
 Guarnizione in PVC da 30 L=2850 - L=3150
 PVC seals da 30 L=2850 - L=3150

(Kg./mt.0,480)



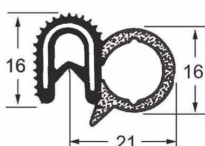
Art. 49-00033
 Guarnizione GUI SNAP
 GUI SNAP seal

(Kg.0,140)
 (rotolo/roll mt.50)



Art. 49-00034
 Guarnizione GUI SNAP con palloncino superiore
 GUI SNAP seal

(Kg.0,224)
 (rotolo/roll mt.50)

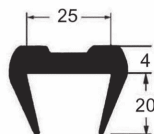


Art. 49-00035
 Guarnizione GUI SNAP con palloncino laterale
 GUI SNAP seal

(Kg.0,232)
 (rotolo/roll mt.25)

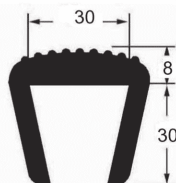
GUARNIZIONI

SEALS

**Art. 49-00025**

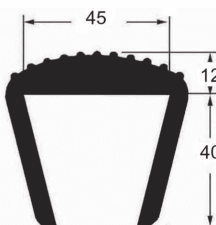
(Kg./mt.0,270)

Guarnizione salva sponde serie 25 L=6000
*Profiles for protection of tipper and float
 with tickness 25 - L=6000*

**Art. 49-00089**

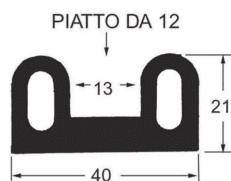
(Kg./mt.0,700)

Guarnizione per sponde da 30 L=4000
Profiles for protection of tipper and float with tickness 30 L=4000

**Art. 49-00084**

(Kg./mt.1,010)

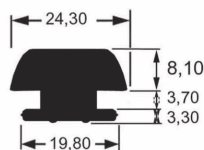
Guarnizione per sponde da 45 L=2500
Profiles for protection of tipper and float with tickness 45-L=2500

**Art. 49-00040**

(Kg./mt.0,702)

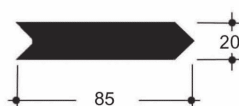
Guarnizione tipo "B"
Seal "B" type

(rotolo/roll mt.25)

**Art. 49-00098**

(Kg./mt.0,335)

Guarnizione sponda per profili
Seal for aluminium profiles

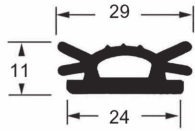
**Art. 49-00063**

(Kg.0,002)

Coprigiunto PVC per guarnizione PVC
PVC joint for PVC seal

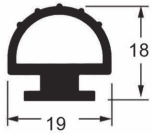
GUARNIZIONI

SEALS



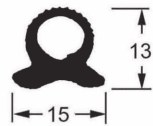
Art. 49-00031
 Guarnizione per profilo 21-00028
 Seal for profile 21-00028

(Kg./mt.0,193)
 (rotolo / roll 50mt.)



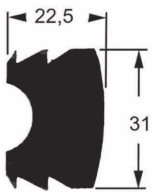
Art.49-00079
 Guarnizione per profilo 21-00029
 Seal for profile 21-00029

(Kg./mt.0,208)
 (rotolo / roll 50mt.)



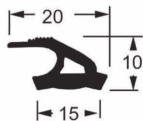
Art. 49-00032
 Guarnizione per profilo 21-00030
 Seal for profile 21-00030

(Kg./mt.0,089)
 (rotolo / roll 50mt.)



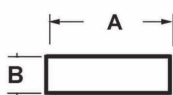
Art. 49-00043
 Guarnizione per profilo 21-00041
 Seal for profile 21-00041

(Kg./mt.0,810)
 (rotolo/roll 28 mt.)



Art. 49-00083
 Guarnizione per profilo 17-00098
 Seal for profile 17-00098

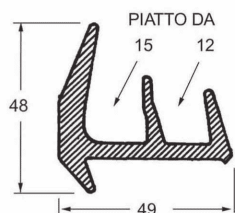
(Kg./mt.0,088)



Art.	Guarnizione	Seal	A	B	Rotolo Roll	Kg/mt.
49-00039	Spugna	Seal sponge	15	5	10 mt.	0,015
49-00038	Mouse adesivo	Adhesive seal "Mouse"	15	4	10 mt.	0,010
49-00042	Mouse adesivo	Adhesive seal "Mouse"	20	8	10 mt.	0,028
49-00041	Mouse adesivo	Adhesive seal "Mouse"	50	5	10 mt.	0,045

GUARNIZIONI

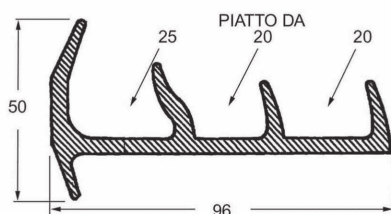
SEALS

**Art. 49-00036**

(Kg./mt.0,812)

Guarnizione gomma a 2 labbra per frigo
Rubber door profiles for refrigerated body

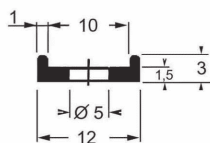
(rotolo / roll 25 mt.)

**Art. 49-00037**

(Kg./mt.1,037)

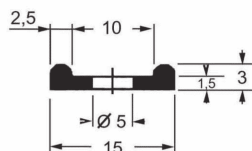
Guarnizione gomma a 3 labbra per frigo
Rubber door profiles for refrigerated body

(rotolo / roll 15 mt.)

**Art. 49-00087**

(Kg.0,160)

Profilo alluminio per fissaggio guarnizioni
 in gomma 12mm. barre L=3000
Seal fastening profile 12mm. - bars L=3000

**Art. 49-00088**

(Kg.0,220)

Profilo alluminio per fissaggio guarnizioni
 in gomma 15mm. barre L=3000
Seal fastening profile 15mm - bars L=3000

Art. 49-00088/P

(Kg.0,282)

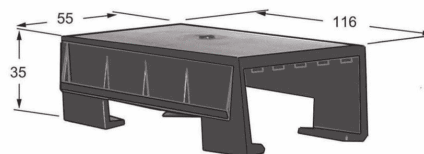
Profilo alluminio per fissaggio guarnizioni
 in gomma 15mm. barre L=3800
Seal fastening profile 15mm - bars L=3800

**Art. 49-00096**

(Kg./mt.0,050)

Guarnizione per piani mobili
Seal for moving floor

(rotolo / roll 150 mt)

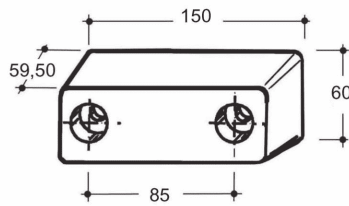
**Art. 49-00095**

(Kg.0,053)

Scorrevole per piani mobili
Sliding for moving floor

Tamponi e Paracolpi

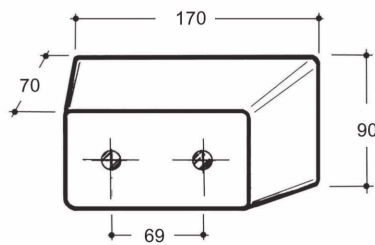
Rubber buffers



Art. 49-00047

Tampone in gomma 150x60xH.59,50
 Rubber buffer 150x60xH.59,50

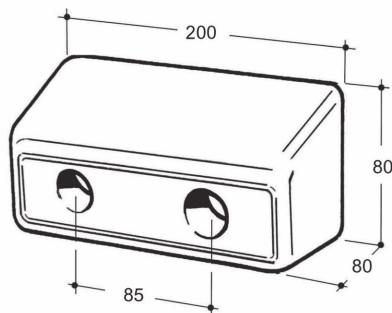
(Kg.0,604)



Art. 49-00046

Tampone in gomma 170x90xH.70
 Rubber buffer 170x90xH.70

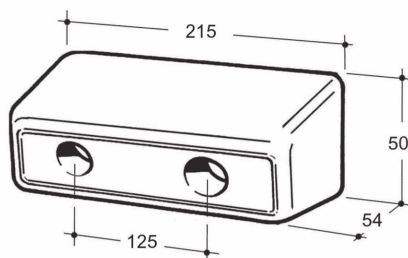
(Kg.1,115)



Art. 49-00051

Tampone in gomma 200x80xH.80
 Rubber buffer 200x80xH.80

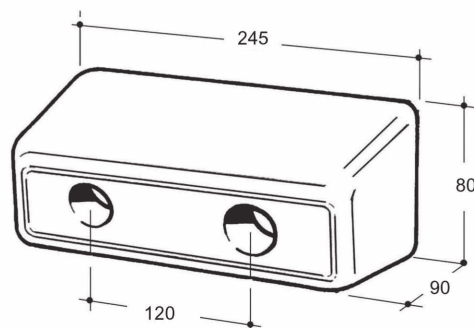
(Kg.1,410)



Art. 49-00045

Tampone in gomma 215x50xH.54
 Rubber buffer 215x50xH.54

(Kg.0,607)



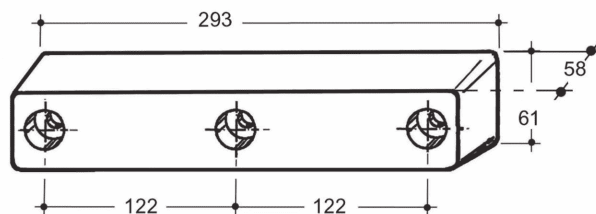
Art. 49-00052

Tampone in gomma 245x80xH.90
 Rubber buffer 245x80xH.90

(Kg.1,630)

Tamponi e Paracolpi

Rubber buffers

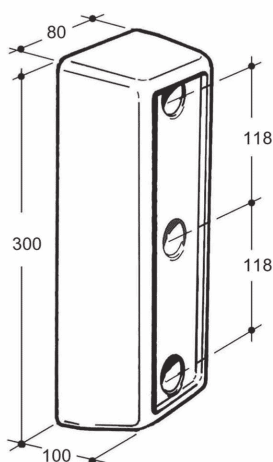


Art. 49-00048

Tampone in gomma 293x61xH.58

(Kg.1,338)

Rubber buffer 293x61xH.58

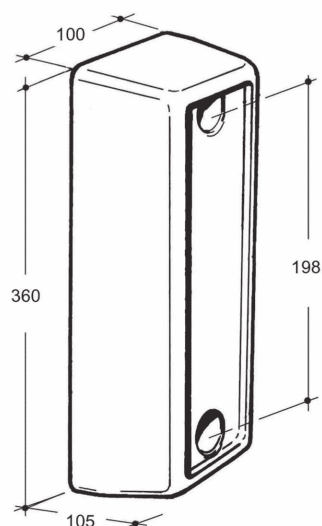


Art. 49-00049

(Kg.2,753)

Tampone in gomma 300x80xH.100

Rubber buffer 300x80xH.100

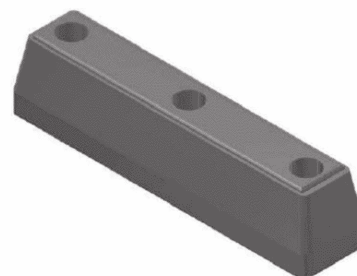
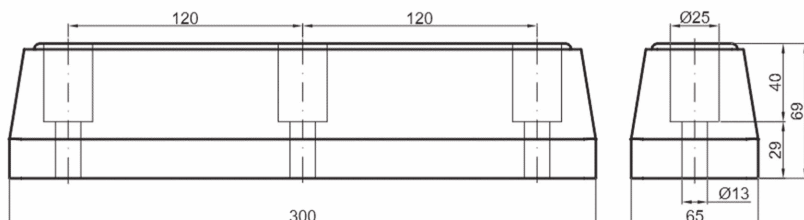


Art. 49-00061

(Kg.4,034)

Tampone in gomma 360x100xH.105

Rubber buffer 360x100xH.105



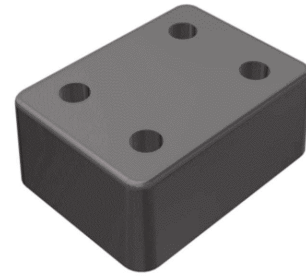
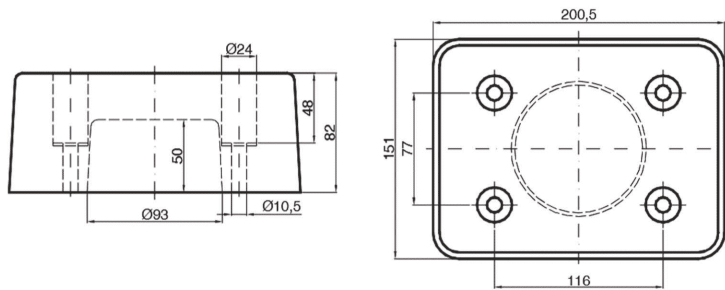
Art. 49-00064

(Kg.1,715)

Tampone in gomma 300x50xH.66 / Rubber buffer 300x50xH.66

Tamponi e Paracolpi

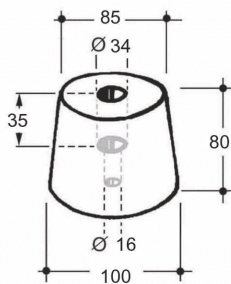
Rubber buffers



Art. 49-00076

(Kg.3,000)

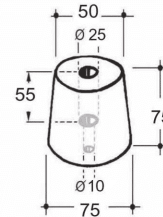
Tampone in gomma 200x150xH.80 / Black rubber buffer 200x150xH.80



Art. 49-00050

(Kg.0,655)

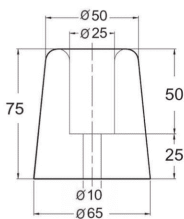
Tampone in gomma D.100xD.85xH.80
Conical rubber buffer D.100xD.85xH.80



Art. 49-00062

(Kg.0,305)

Tampone in gomma D.75xD.50xH.75
Conical rubber buffer D.75xD.50xH.75



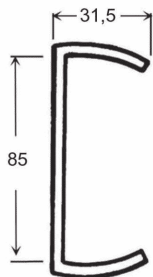
Art. 4900075

(Kg.0,305)

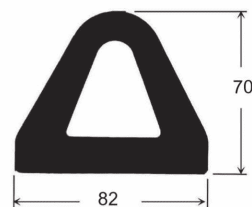
Tampone in gomma D.65xD.50xH.75
Conical rubber buffer D.65xD.50xH.75

Tamponi e Paracolpi

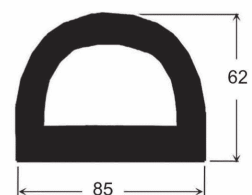
Rubber buffers



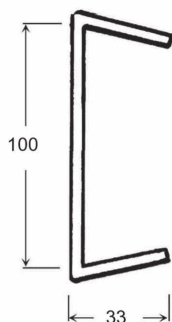
Art. 49-00058 (Kg.6,000)
 Supporto zinc. L=2600 per tamponi
 49-00053 e 49-00055
*Galv.steel fixing profile L=2600
 for bumper 49-00053 and 49-00055*



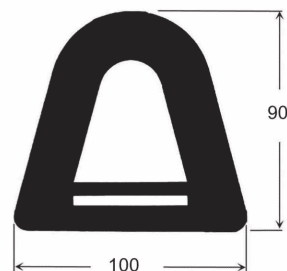
Art. 49-00053 (Kg.10,000)
 Tampone in gomma L=2600 - H.70 - L.82
Black rubber bumper profile L=2600 - H.70 - L.82



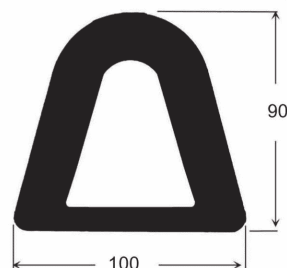
Art. 49-00055 (Kg.9,540)
 Tampone in PVC L=2600 - H.62 - L.85
PVC bumper profile L=2600 - H.62 - L.85



Art. 49-00057 (Kg.6,460)
 Supporto zinc.L=2600 per tamponi
 49-00054 e 49-00056
*Galv.steel fixing profile L=2600
 for bumper 49-00054 and 49-00056*



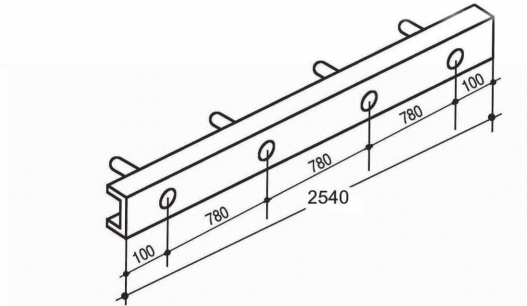
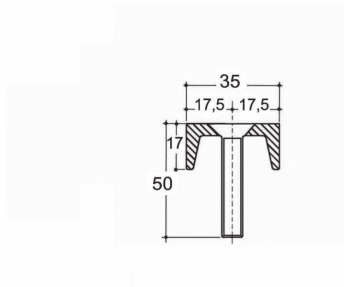
Art. 49-00054 (Kg.15,000)
 Tampone in gomma L=2600 - H.90 - L.100
Black rubber bumper profile L=2600 - H.90 - L.100



Art. 49-00056 (Kg.13,560)
 Tampone in PVC L=2600 - H.90 - L.100
PVC bumper profile L=2600 - H.90 - L.100

Tamponi e Paracolpi

Rubber buffers



Art. 49-00068

(Kg.5,502)

Supporto zincato L=2540 per fissaggio tamponi 49-00070-71

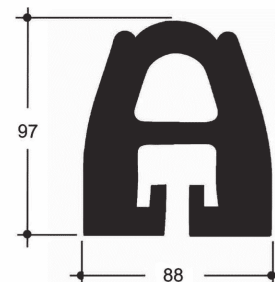
Galvanized steel fixing profile L=2600 for bumper 49-00070 and 49-00071

Art. 49-00070

(Kg.12,350)

Tampone in gomma posteriore L=2600 - H.97 - L.88

Black rubber rear bumper profile L=2600 - H.97 - L.88

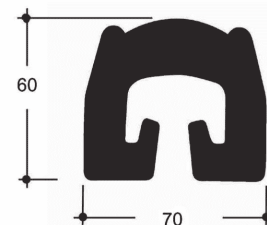


Art. 49-00071

(Kg.10,635)

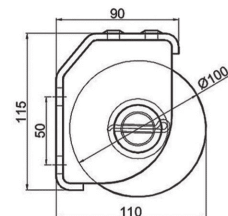
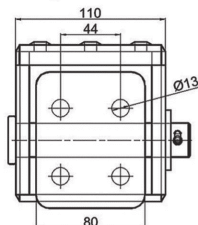
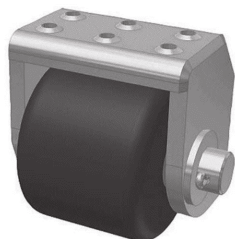
Tampone PVC/GOMMA posteriore L=2600 - H.60 - L.70

Black rubber/PVC rear bumper profile L=2600 - H.60 - L.70

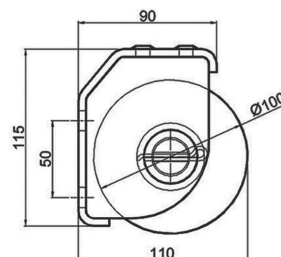
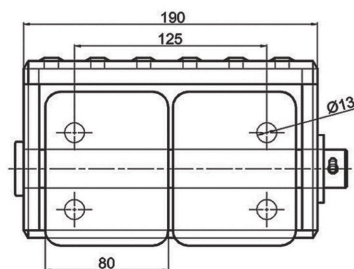
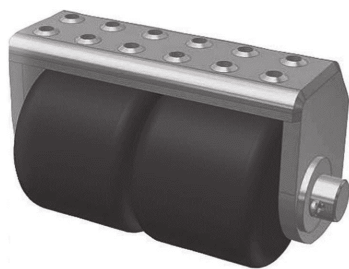


Paracolpi

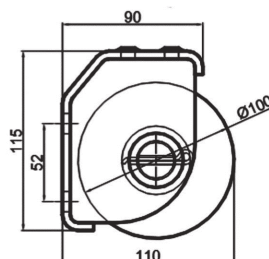
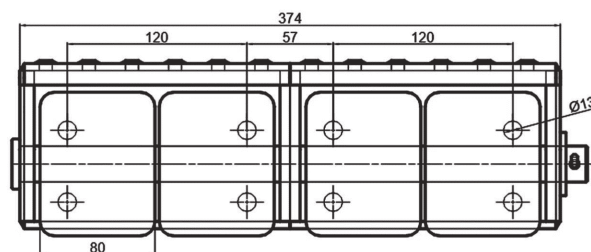
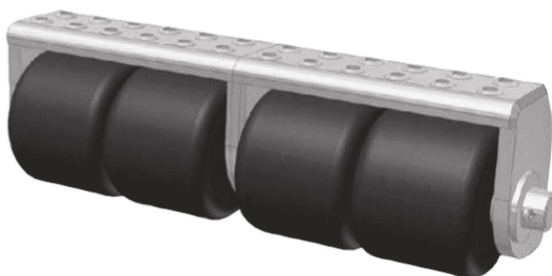
Buffers

**Art. 49-00180**Paracolpi posteriore orizzontale con struttura zincata
(1 rullo)

(Kg.2,750)

*Horizontal roller buffers zinc plated housing
(1 roller)***Art. 49-00182**Paracolpi posteriore orizzontale con struttura zincata
(2 rulli)

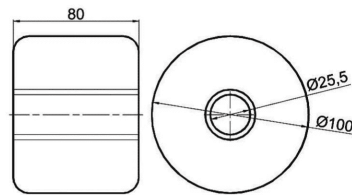
(Kg.5,500)

*Horizontal roller buffers zinc plated housing
(2 roller)***Art. 4900184**Paracolpi posteriore orizzontale con struttura zincata (4 rulli)
Horizontal roller buffers zinc. plated housing

(Kg. 11,000)

Paracolpi

Buffers

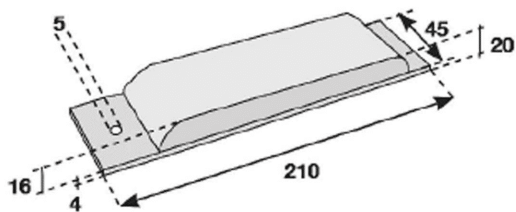


Art. 49-00185

Rullo per paracolpi 49-00180 e 49-00182

(Kg.0,880)

Roller for buffers 49-00180 and 49-00182



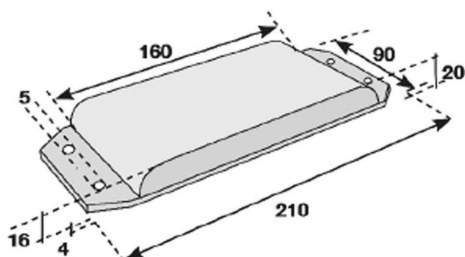
Art. 49-00080

Batticolpo per ribaltabile 210 x 45 x Sp. 4 lam.+16 gomma
 Rubber support for tilting body 210 x 45 x Tc. 4 + 16 rubber

(Kg.0,430)

Sp.lamiera
 Tc. plate = 4

Sp. gomma
 Tc.rubber =16



Art. 49-00081

Batticolpo per ribaltabile 210 x 90 x Sp. 4 lam.+16 gomma
 Rubber support for tilting body 210 x 90 x Tc. 4 + 16 rubber

(Kg.0,920)

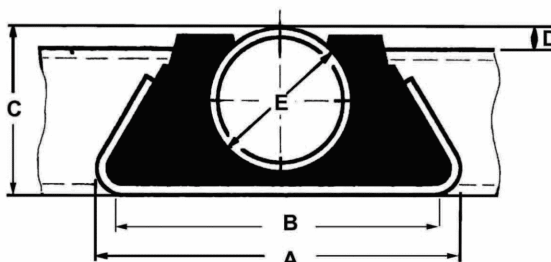
Sp.lamiera
 Tc. plate = 4

Sp. gomma
 Tc.rubber =16

Supporti per tubo D.35 e D.50

Supports for tube D.35 and D.50

ART	Dimensioni / Dimensions					Lungh. Length	KG.
	A	B	C	D	E		
49-00065	102	93	46	8	35	50	0,295
49-00066	127	109	57	8	50	50	0,444
49-00067	102	93	46	8	35	50	0,173



Art. 49-00065
Supporto completo D.35
(gomma + ferro)
Support complete D.35
(rubber + steel)



Art. 49-00065F
Supp. ferro per tubo D.35
Steel supp. for tube D.35
(Kg.0,181)

Art.49-00065G
Supp. gomma per tubo D.35
Rubber supp. for tube D.35
(Kg.0,114)

Art. 49-00066
Supporto completo D.50
(gomma + ferro)
Support complete D.50
(rubber + steel)



Art. 49-00066F
Supp. ferro per tubo D.50
Steel supp. for tube D.50
(Kg.0,243)

Art.49-00066G
Supp. gomma per tubo D.50
Rubber supp. for tube D.50
(Kg.0,201)

Art. 49-00067
Supporto completo D.35
(gomma + alluminio)
Support complete D.35
(rubber + aluminium)



Art. 49-00067A
Supp. alluminio per tubo D.35
Aluminium supp. for tube D.35
(Kg.0,059)

Art.49-00065G
Supp. gomma per tubo D.35
Rubber supp. for tube D.35
(Kg.0,114)

